

# Alaska Department of Fish and Game

Habitat Section  
Southeast Region



## 112-12-10250-2010 Tributary 6

## ADDITION

**Waterbody name:**

**Survey date:** 8/2/2022

**Quad:** Sitka C-4

**Species & Lifestage:**

**Upper Reach Latitude:** 57.663059 **Longitude:** -135.029549

**Survey crew:** DK, EK

**Lower Reach Latitude:** 57.662263 **Longitude:** -135.021046

**Findings:** We surveyed this uncataloged stream using a backpack electrofisher and a GPS and captured juvenile coho salmon, cutthroat trout, and Dolly Varden (Figure 1). The stream channel is forested with log jams present throughout and substrate varying from small gravel to bedrock in the surveyed reach (Table 1; Figures 2, 3).

**Recommendations:** Add this uncataloged stream to the anadromous waters catalog for rearing coho salmon (Figure 4).

**Nomination:** Pending

Table 1.—112-12-10250-2010 tributary 6 survey data.

Waypoint	Latitude	Longitude	Notes	Stream Width ft	Stream Substrate	Habitat Features	Gradient %	Sample Effort	Sample Results
1223	57.663215	-135.029513	Rock cascade about 8 ft tall.						1 DV 4 CT
1224	57.663584	-135.029621	Confluence of small tributary						
1225	57.663703	-135.029695	5ft CMP, well bedded. 40 percent embedded. Outlet into roughened channel. Passable by fish, found one CT. 50 feet subsurface flow upstream of culvert. Upstream grade around 2-4.						1 CT
1258	57.662273	-135.021043	Confluence with large stream.	15-20			1-2		
1261	57.662833	-135.023292	Significant bedload on main channel. Coho caught above log jam	15-20	Large Gravel		4-6	EF	2 CO 2 CT
1262	57.662767	-135.023142	Large log jam that impounds sediment and rocks, maybe obstruct fish passage. Young of the year coho caught just downstream of it.	20-25	Large Gravel		2-4	EF	2 CO 1 Trout
1263	57.662796	-135.023837	Becomes incised in canyon.					EF	6 CO
1406	57.662767	-135.028077		15-20	Cobble Large Gravel	Log Jams	2-4	EF	3 CO 2 DV
1407	57.662608	-135.028694	Tributary enters on river right. Described in notes. Main channel has large logjam across, passable at most flows	12-15	Cobble		4-6		

Table 2.– 112-12-10250-2010 tributary 6 survey data continued.

Waypoint	Latitude	Longitude	Notes	Stream Width ft	Stream Substrate	Habitat Features	Gradient %	Sample Effort	Sample Results
1408	57.662496	-135.028881	Upstream grade drops to 6%. No anadromous fish caught, resident fish habitat		Bedrock Cobble		8-10		3 CT 1 DV
1409	57.662364	-135.029131	Conditions continue, no salmon caught. Likely resident only		Bedrock Cobble	Large Pool			5 CT
1410	57.662768	-135.029357	Grade lowers on main channel.	25-30	Cobble Large Gravel	Log Jams Large Pool		EF	2 CO 2 CT
1411	57.662886	-135.029473	Tributary enters on river right.	12-15	Small Gravel		2-4		
1412	57.662840	-135.029769	Grade increases, no anadromous fish caught.	12-15	Large Gravel		6-8	EF	2 CT 1 DV
1413	57.662858	-135.030218	Grade increases. End of survey due to time	8-10			8-10	EF	1 CT
1414	57.663063	-135.029569	Young of the year coho. Grade increases upstream	25-30	Cobble	Large Pool	8-10	EF	2 CO
1415	57.663228	-135.029587	8 ft tall cascade/waterfall, no clear jump pool on the main portion. Flow dependent pass on river left that may provide adult passage at high flow.					EF	6 CT
1416	57.662743	-135.028943	Series of log jams that are about 3-4 ft tall, jump pools are well formed. Adult fish passage possible but coho density lower upstream						



Figure 1.–Juvenile coho salmon captured at waypoint 1406.





Figure 2.—Channel at waypoint 1263 facing upstream.



Figure 3.— Channel at waypoint 1410 facing upstream.



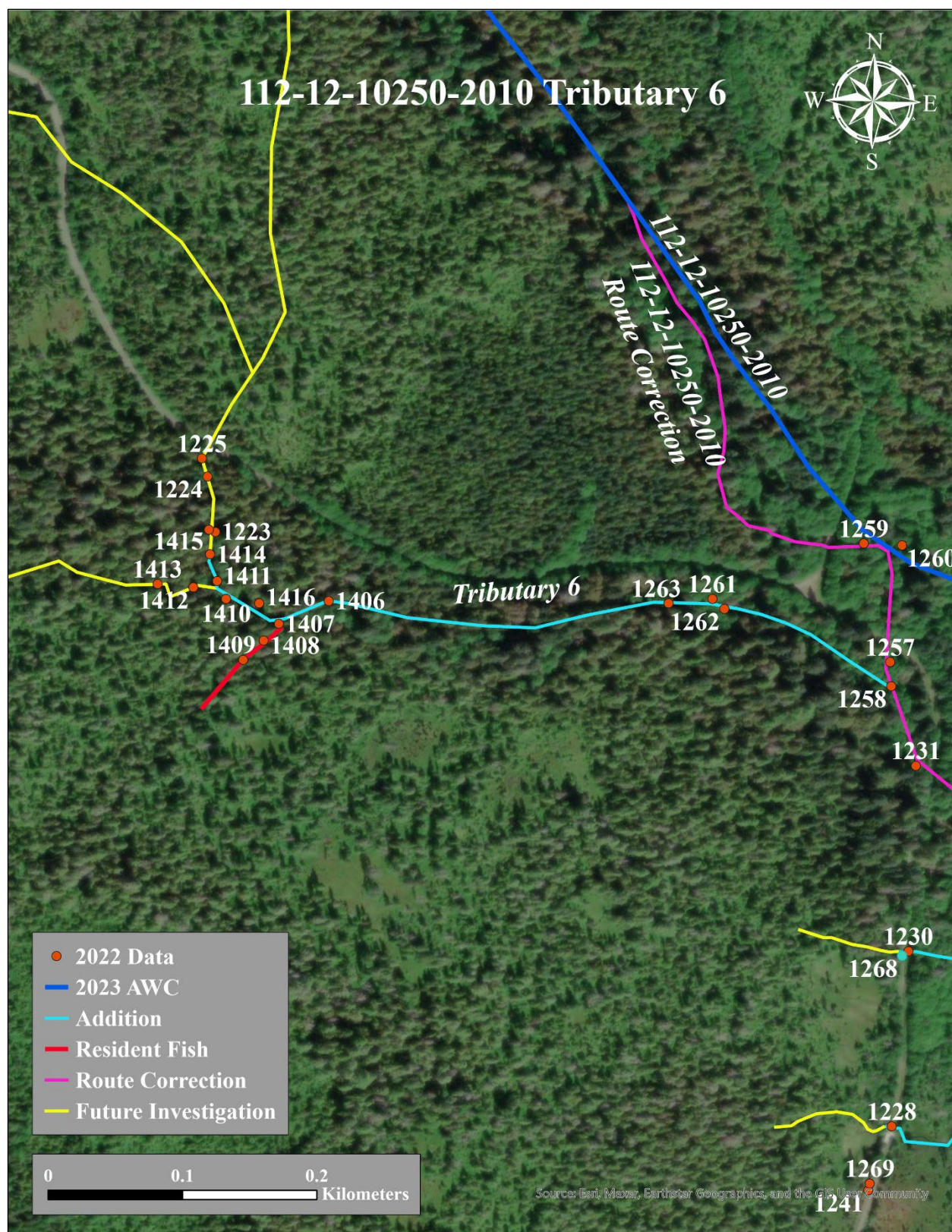


Figure 4.–112-12-10250-2010 tributary 6 addition map.